

# SUNJIN

Total Solution Provider Since 1962

- High Quality Service
- Guaranteed Delivery
- Competitive Price
- Customer Satisfaction
- Flexibility in Orders
- Safety First



# Vessel Repair Service

## Business Area

- Total Vessel Repair with 320m pier & docking facilities
- Customized Technical and Engineering Services
- Engine & Machinery Commissioning, Repair, A/S Service
- Project Coordination including Manpower and Procurement for each stage

[All kinds of vessel engineering, maintenance & repair services are available!](#)



# Genuine Spare Parts Supply

## Business Area

- MAN 2 & 4 Stroke Engine Parts Supply – STX Authorized Dealer
- High Speed Engine & Parts Supply – CUMMINS, STEYR MOTORS, VOLVO PENTA Authorized Dealer
- Hydraulic Parts – Rolls Royce, TWG Winch Group Authorized Dealer

[Only high quality genuine parts will be provided in a time manner!](#)



## Why SUNJIN,

- Experiences and Know-how over 60 years
- Technical support and A/S Service for STX-MAN engine by highly skilled engineers
  - Troubleshooting solution for Emcy'/Exchange base repair and Onboard Maintenance
  - Technical Assistants for changing parts by international regulations
- Fast and accurate parts supply according to Onboard Planned Maintenance Schedule
- Re-conditioning work at the workshop

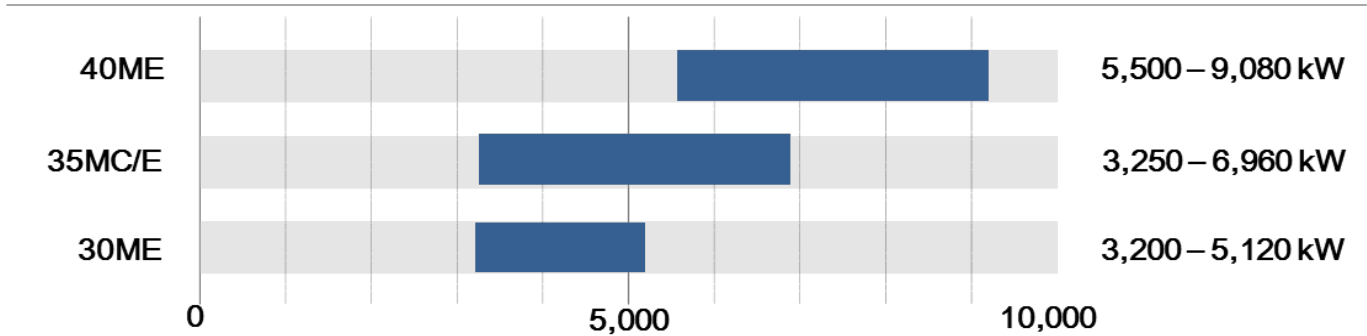


## STX Authorized Agency

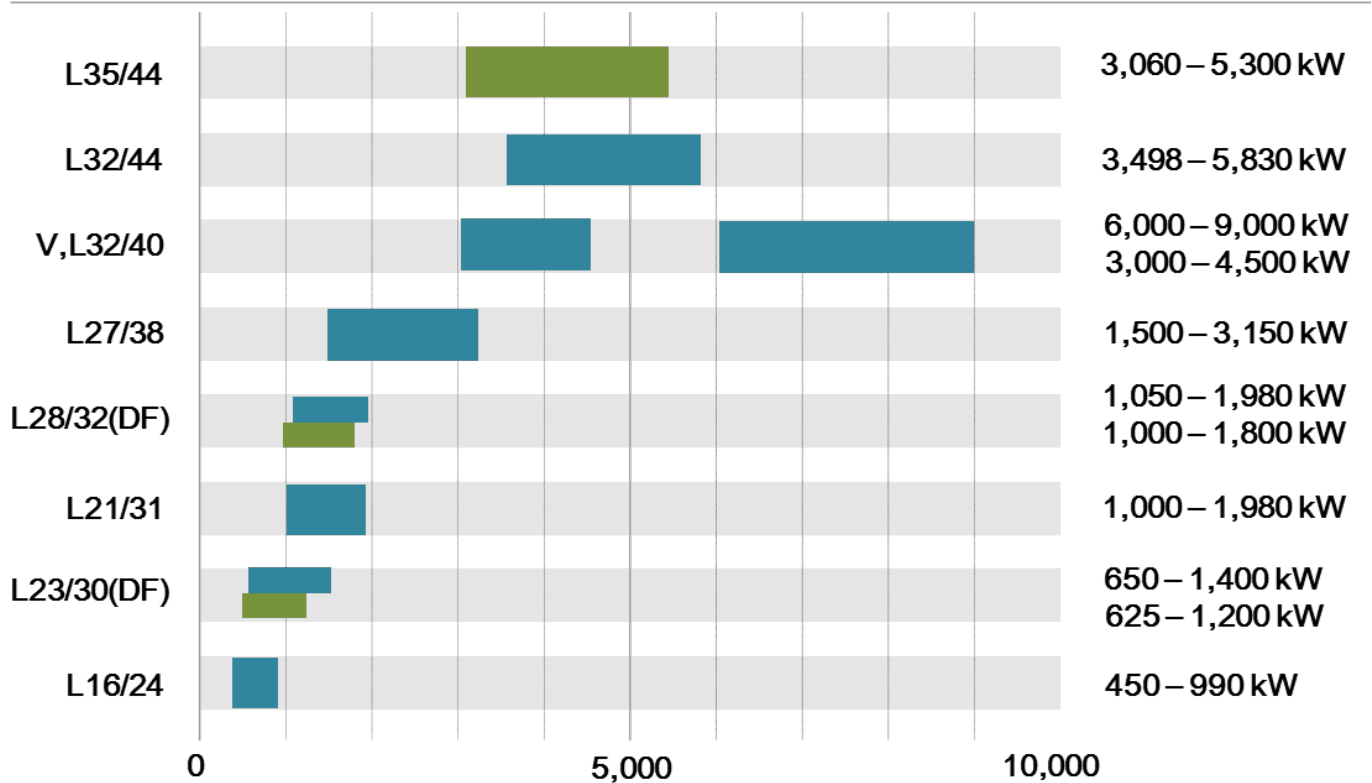
- As an authorized distributor of STX Engine, we supplies genuine parts for medium and large diesel engines to domestic and foreign customers.
- We have lots of Genuine Parts stocks for all STX Engine models; so, we can handle the emergency orders. We can also provide the parts with competitive prices and fast delivery time for customers' satisfaction.

## Supply Model Lines

- MAN 2 Stroke Engine



- MAN 4 Stroke Engine



- NIIGATA L17AHX/HLX, 6NSDG(M), L16XC





## Why Cummins Authorized Dealer SUNJIN,

- **Highly Skilled Technicians!**

We provide the certified & skilled technicians for Cummins Engine Overhaul.

- **To meet the Customer's Needs!**

We provide various services for the customer's satisfaction.

- **Only Genuine Spare Parts Supply!**

We have adequate and genuine Cummins parts in our warehouse to provide prompt service to the customers for major models .

- **Various Recommendation Certificates for High Speed Engine!**

We are specialized in all types of Marine Speed Engine Overhaul.

- **All Marine Propulsion, Auxiliaries, Gensets are available now!**

QSK, QSM, QSL, QSB, KTA, NTA, VTA, ONAN Genset, C-Power Marine Genset, etc.  
All kinds of Cummins genuine spare parts are available.



Dear Cummins Customer,

Sunjin Jonghap has been an authorized dealer of Cummins Sales and Service Korea (CSSK) since 2008. They have been a reliable partner of CSSK and have continuously grown by providing excellent sales and service to their customers. They are very experienced in maintenance, repair and overhaul of Cummins engines.

I am pleased to recommend Sunjin Jonghap as an authorized dealer to your company for the sales, technical advice, or aftermarket services on Cummins engines.

**Bill Kime**  
General Manager  
Director & General Manager  
Korea Distribution Business Unit



Cummins Sales and Service Korea Co., Ltd.  
228-1, Songgo-gil, Songgo-Eup, Seobuk-Gu  
Cheonan-City, ChoongNam-Do  
(Zip) 31044, South Korea





## Why SUNJIN,

- **Authorized Sales/Service Distributor!**  
We are an exclusive distributor in S. Korea and provide the certified & skilled technicians.
- **To meet the Customer's Needs!**  
We provide parts and technical services for the customer's satisfaction.
- **All Marine Propulsion!**  
SE 4 & 6 cylinder, MO 4 cylinder, SEC 4-cylinder engine (55-215 kW), HDS, IFG, etc.



# Rolls-Royce

## Why SUNJIN,

- **Service with our own piers & workshop!**  
Own Piers & docking facility with service partnership  
Site areas consists in total of 7,500 square meters  
Various machine tool, welding, testing/blasting equip.
- **Genuine Spare Parts!**  
S/G, Mooring Winch/Windlass parts are available with timely delivery of genuine parts to your vessel.
- **Total Solution Provider!**  
Allow tailored solutions more suited to individual customer needs.

## Rolls-Royce extends service capability in South Korea with Sunjin Entech Paternship

23 March 2015

Rolls-Royce has extended its service capability in South Korea by partnering with Busan-based ship-repairer Sunjin Entech.

The new service agreement means that Rolls-Royce can now provide customers with a bespoke one-stop service solution at the Gupjung and Youngdo yards, Sunjin's two main repair hubs.

Kim Jae Chul, Sunjin Entech, President said: "This partnership agreement with Rolls-Royce allows us to enhance the technologies and services we can offer our customers. By packaging quality spares and services from Rolls-Royce into a single ship repair solution we become more competitive and attractive to existing and potential customers."

Anthony Tan, Rolls-Royce, Marine Services Director - Northeast Asia, said: "Sunjin has established a solid reputation for ship repair over the past 52 years and this new agreement will further strengthen and enhance its standing in a competitive ship repair market. Sunjin has piers and docking facilities that are ideal for providing a total ship repair solution for engines, hulls, hydraulic equipment and piping work from one location."

The Gupjung facility, situated by the waterfront in the Saehe-gu area, benefits from a boating dock and four finger piers up to 100m in length. These are supported by 15t and 30t Goliath cranes and a state-of-the-art milling, welding and testing workshop.

The Youngdo facility is in the Youngdo-gu area and both facilities offer repair solutions for a broad range of marine equipment and vessel types. Sunjin Entech also offers a range of crew services to customers, including a seafarers' centre and a Russian translation service.

# SIEMENS

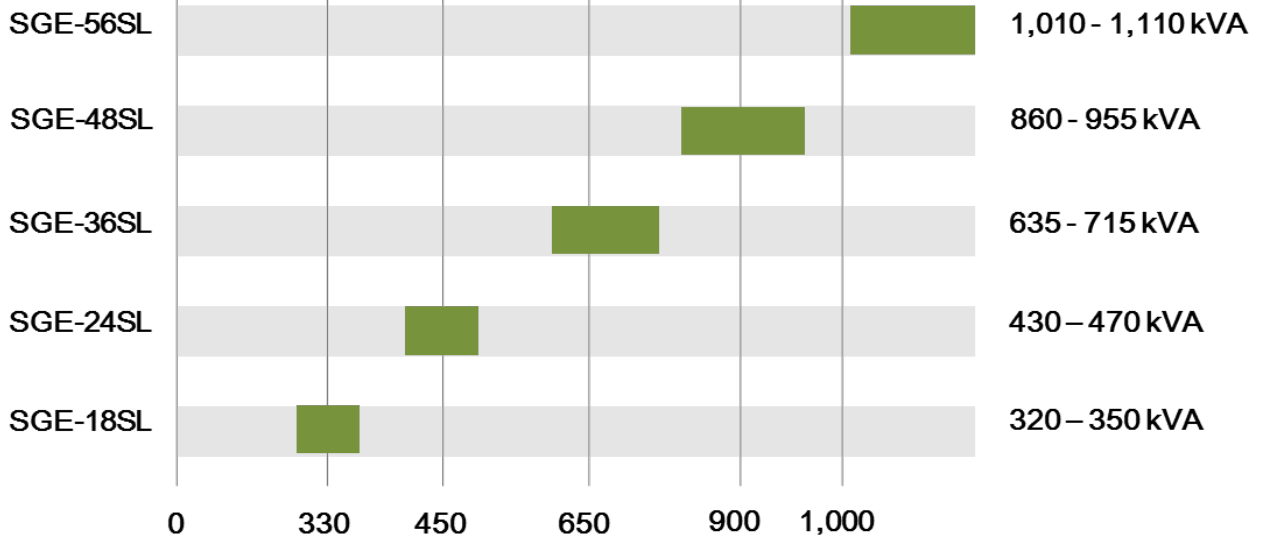
## Supply Model Lines

Authorized Distributor

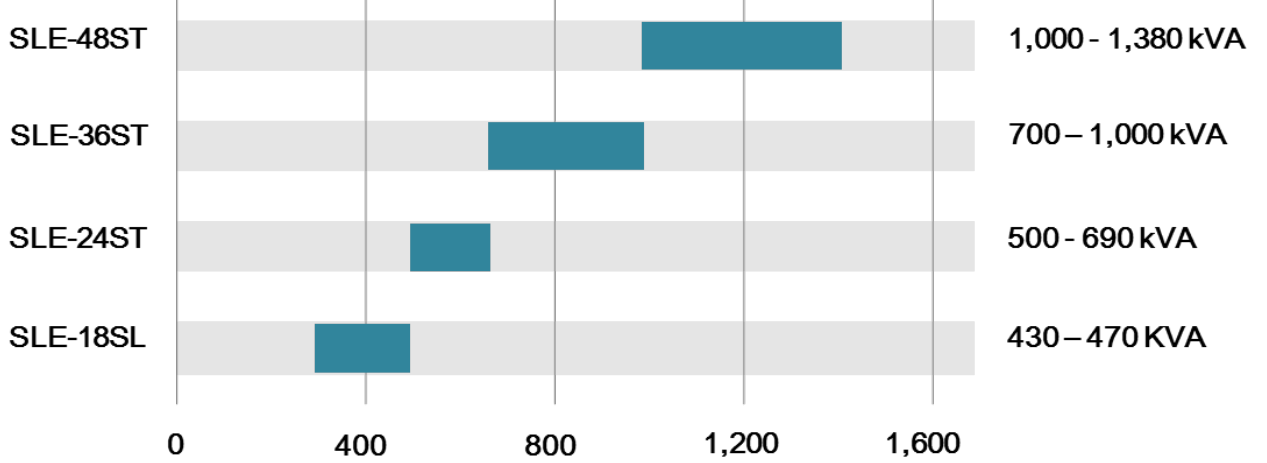
### Gas Fuelled Generation

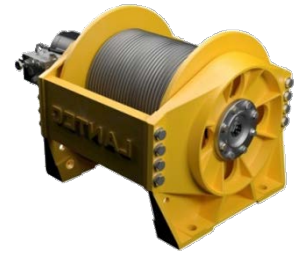
Below IMO Tier III

IMO Tier II Range



### Diesel Fuelled Generation





## Supply Model Lines

DP Winch	<u>Planetary winches</u> for commercial/government equipment Serving the towing and recovery markets
Gear Products	<u>Planetary/worm gear winches</u> , drives, rotator for trucks, cranes, heavy equipment Serving the utility, construction, forestry, marine, and mining markets
Greer	<u>Load moment indicators</u> , anti-two block systems, angular rotation feedback, and drum rotation indicators for lattice and telescopic boom cranes
LANTEC	<u>Planetary winches</u> , hoists, and gear reducers
Pullmaster	<u>Planetary winches</u> for commercial fishing boats, caisson drilling equipment, pipe layers, tractor/skidder, and dredges
Tulsa Winch	<u>Planetary/worm gear winches</u> , swing drives for large oilfield trucks, heavy haul tractor packages, digger derricks, cranes and aerial work platforms
RUFNEK	<u>Planetary/worm gear winches</u> , rotating mousehole, rotary table drives, and coiled tube injector heads for oilfield equipment



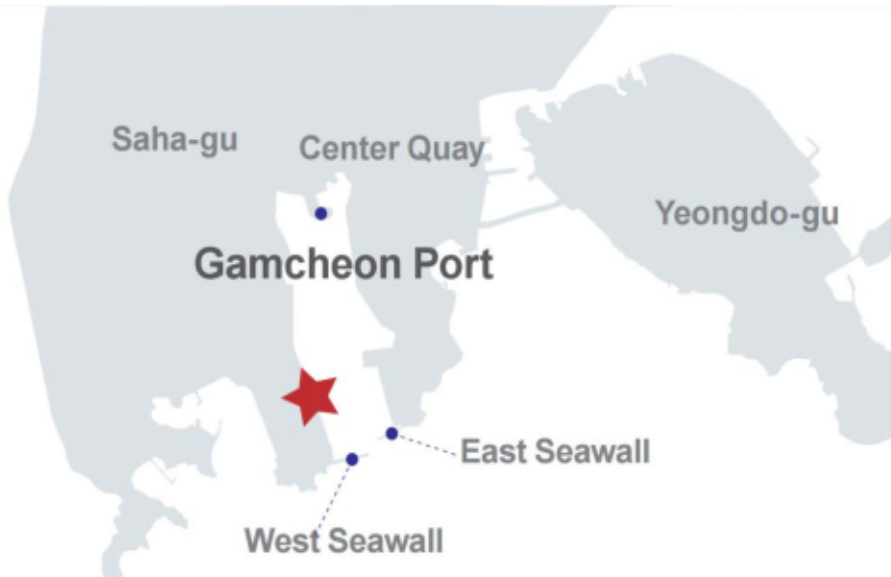


# Other

## Other Supply Lists



## Contact Info



**SUNJIN ENTECH**

#11, Gamchunhang-ro 405beon-gil,

Saha-gu, Busan, Korea

Tel. +82-51-414-7308

Fax. +82-51-262-3520

E-mail [service@sunjincmk.com](mailto:service@sunjincmk.com)

